

APPLICATION

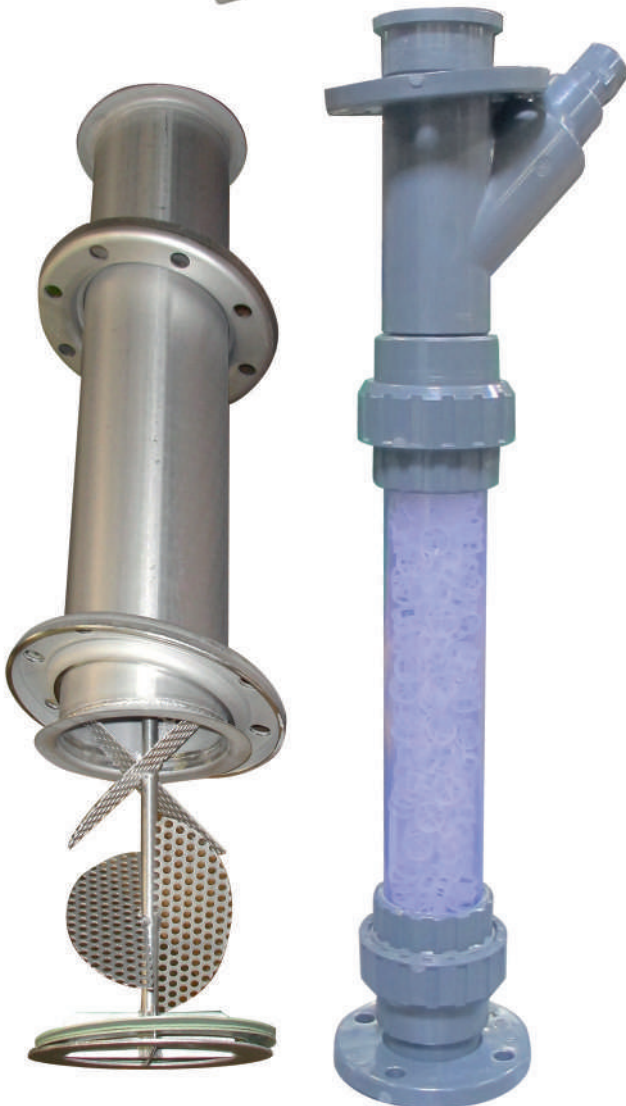
For homogenising two liquids that transit through the mixer, with no external mechanical force.

PRINCIPLE

The two liquids are introduced upstream of the static mixer. The fluid streams are separated by the Pall rings in the mixture to produce a homogenous solution. The choice of mixer is determined by the available upstream pressure and the required outlet pressure.

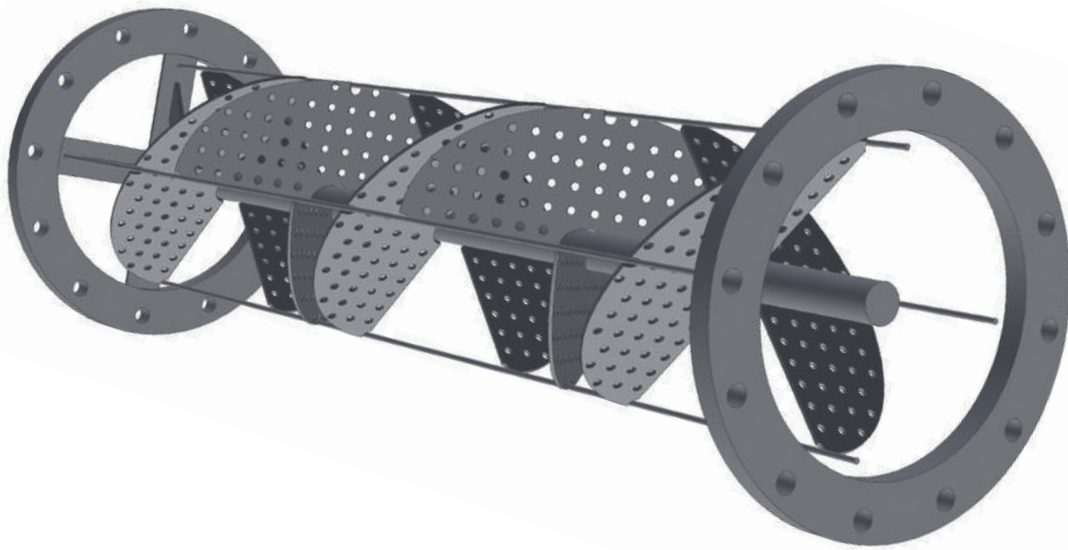
OPTION

- Stainless steel construction
- Specialised couplings



TECHNICAL DATA

Type	Flow (m ³ /h)	Dimensions	
		Length	Ø couplings
MS 1500	0,3 à 1,5	680	3/4"
MS 3500	1,3 à 3,5	760	3/4"
MS 8700	2,3 à 8,7	850	1"
MS 14200	3,8 à 14,2	940	1"1/4
MS 24000	6,3 à 24	1100	1"1/2



> Drawing for illustration purposes

