



## APPLICATION

Each mixer consists of a sealed main tank with capacities ranging from a few to several dozen litres, a high-speed agitator for the intimate mixing of effluents, and a mechanical seal or stuffing box. They work by mixing rapidly during the short residence time of the effluents. This is known as «Flash mixing», which dissipates a large amount of energy for the low volume that is treated. The velocity gradient is usually very high ( $> 500 \text{ s}^{-1}$ ).

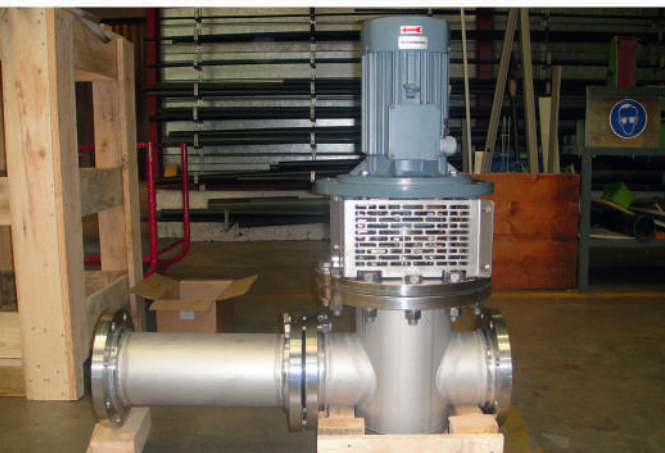
We supply with three-phase 50 Hertz tropicalized motors as standard. The standard impeller shaft is made from 316L stainless steel.

## OPTIONS

- Specific voltages
- 60 Hz
- Atex motor
- Mechanical seal or stuffing box
- Sensors
- Lubricators
- Variable frequency drive
- Rain cover
- High-specification materials (Uranus 52N, Uranus B6, coating, etc)
- Other options are available according to requirements. Contact us for information.

## SUMMARY

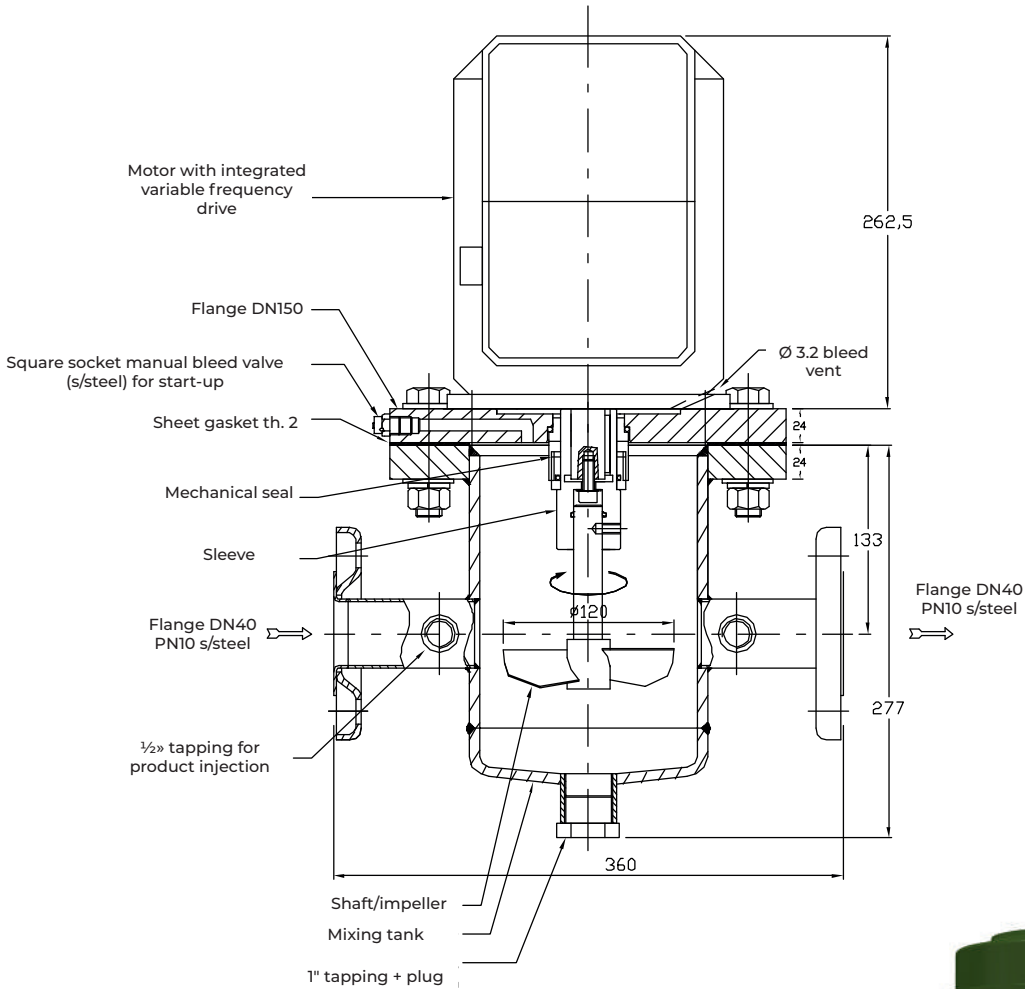
- In-line mixing
- Compact build with minimum footprint
- Easy to operate, install and maintain
- Standard 230/400 V - Three-phase 50 Hz Tropicalized
- Multiple options available



# TECHNICAL DATA

Type	Ø Impeller	P (kw)	N (tr/min)	Q (m3/h)	Weight (kg)
3-E-22-430	430	2,2	267	1251	80
3-E-40-500	500	4	267	1800	85
3-I-75-1000	1000	7,5	97	5100	160
3-Q-40-20019	2000	4	27	11400	250

> Drawing for illustration purposes



Bottom view (scale : 1:2)

