



APPLICATION

The layout of some tanks prevents the use of top-entry vertical agitators. We have developed a range of side-entry agitators for use with very high cylinder tanks. The MB3 side-entry agitator attaches to the tank wall by a coupling box. It has a shaft-end impeller and is driven by a double sleeve on the gear shaft. A stuffing box or mechanical seal, or both, provide the seal. The type of agitator is determined by the required application: reagent preparations, homogenisation, neutralisation and all types of mixing operations.

Our side-entry agitators are available in 300 to 800 mm diameter versions. We supply with three-phase 50 Hertz tropicalized motors as standard. The standard impeller shaft is made from 316L stainless steel. The MB3 agitator has a single-piece or three-piece impeller, and is available with multiple options. Some models also have an optional seal that can be removed while the tank is full.

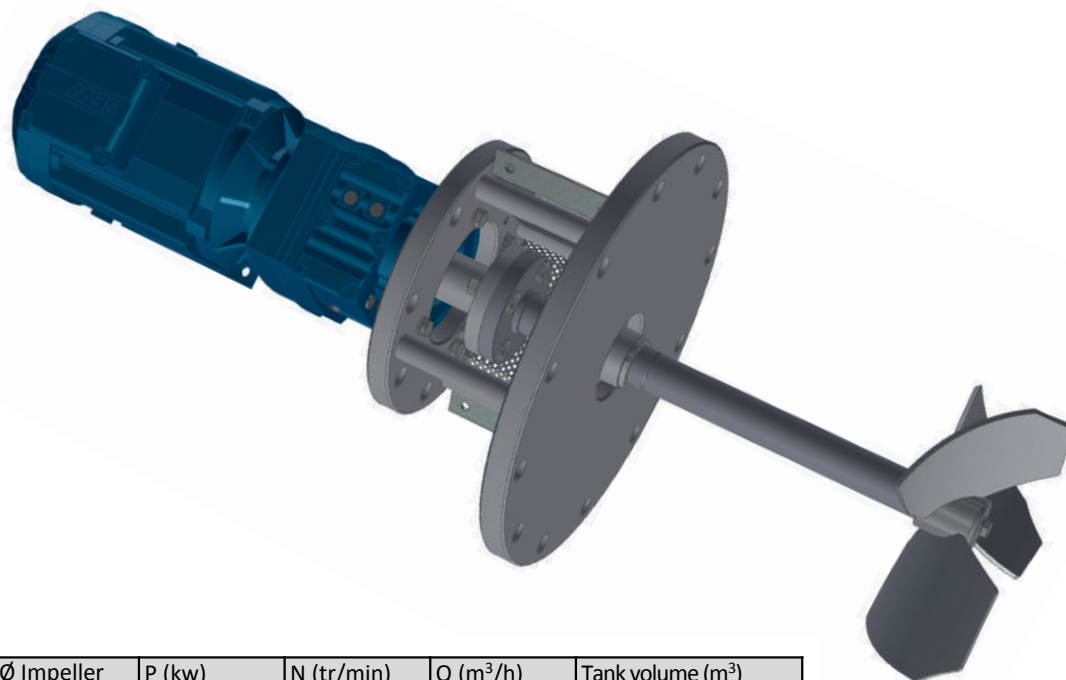
OPTIONS

- Specific voltages
- 60 Hz
- Atex motor
- Removable mechanical seal (full tank)
- Variable frequency drive
- Rain cover
- High-specification materials (Uranus 52N, Uranus B6, etc)
- Other options are available according to requirements. Contact us for information.

SUMMARY

- All types of mixing operation
- Side-mounted coupling box agitator
- Stuffing box or mechanical seal, or both
- Standard 230/400 V - Three-phase 50 Hz Tropicalized
- Multiple options available

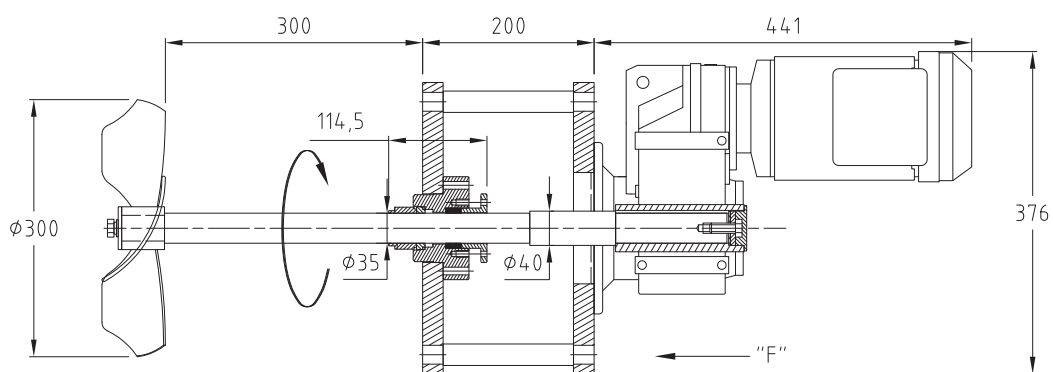
TECHNICAL DATA



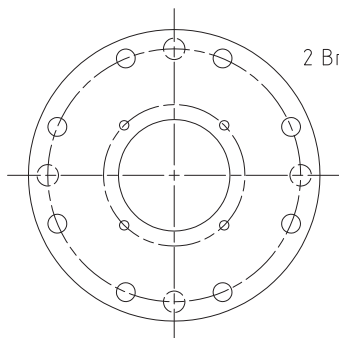
Type	Ø Impeller	P (kw)	N (tr/min)	Q (m ³ /h)	Tank volume (m ³)
MD3 267 0302-5-0304	300	0,75	267	380	10m ³ max
MD3 291 0432-8-0304	430	2,2	291	1213	10 < V < 20 m ³
MD3 176 0504-10-0504	500	4	176	1150	20 < V < 40m ³

These three agitators are available with gland packaging, mechanical seal, or both.

> Drawing for illustration purposes



Vue "F"
(sans motoréducteur)



2 Bride DN200 - Ø340 - ép.24
8 trous Ø22 sur Ø295